

Davidson's recurring giving program

allows you to maximize your gift to The Fund for Davidson in monthly increments. These automatic deductions from the payment method of your choice (credit card, debit card or checking account) allow you to make an impact on the lives of current Wildcats in a budget-friendly, meaningful way.

Reasons to consider a recurring gift to Davidson:

- o **Important:** Your recurring gift provides the college with a critical, reliable source of support.
- o **Convenient:** Simply determine the amount and designation to make an impact all year long.
- o **Secure:** Your automatic payment information is safe. Changes can be made at any time by contacting The Fund for Davidson team.
- o **Simple:** Your gift renews automatically and will significantly reduce the number of solicitations you receive from the college.

So what kinds of things can my monthly contribution support?



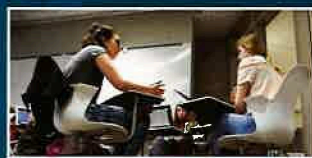
\$10/month = \$120/year

- o The average cost of a monthly counseling service for one student which is provided free of charge through the Center for Student Health and Well-Being.
- o Provides a month's worth of groceries for a student through Lula Bell's Resource Center.



\$50/month = \$600/year

- o Provides books for a student for a year.
- o Contributes to scholarship support for students to excel at the advantage of all Davidson has to offer.



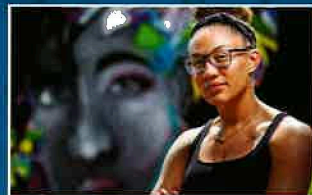
\$75/month = \$900/year

- o Provides funds for at least three students to participate in a professional conference through the Center for Career Development.



\$100/month = \$1,200/year

- o Sustains WDAV's production and operations software for a week, which enables them to produce concert programs such as Carolina Live and the Davidson College Concert Series.
- o Supports faculty research, travel, professional development, education, allowing professors to remain at the top of their field and bring that knowledge and expertise to their teaching.



\$125/month = \$1,500/year

- o Provides a Student Spike! Grant through Friends of the Arts to foster extracurricular student art exploration of any medium.
- o Creates opportunities through the STRIDE Student Experience Fund by way of the college's Diversity & Inclusion designation.



\$415/month = \$5,000/year

- o Creates a named, current-use scholarship for a student.